



Your workforce is your most valuable resource and forward thinking financial services companies recognise that investing in people development is as beneficial to the company as it is to the individual. These companies are increasingly finding the need to monitor and assess ongoing training & competence (T&C), in an efficient and engaging way, both for the advantage of the individual and the business.

In considering these needs you could be asking questions such as how can I:

- create, record and track both individual and business led development?
- allow individuals to record their own continuing professional development (CPD)?
- present the information in an efficient and engaging way for both managers and individuals?
- easily analyse results and trends to highlight risks and aid decision making on future training needs?
- provide an audit trail and evidence of our ongoing training & competence programme?

TestMeOnline can help you to grow your business through your people. A single solution that gives you the tools to create, deliver, record, track and analyse your people development programme.

## what is TestMeOnline?

TestMeOnline is an online service that allows businesses to monitor and assess people development through the creation, distribution, analysis and storage of tests, training events and other T&C activities such as 1:1's, observations, action plans and Continuing Professional Development (CPD).

The solution is designed to allow businesses to create a tailored environment for tracking and recording initial and ongoing competence. Outcomes are stored against an individual training & competence (T&C) log, so that they can be retrieved for evidence, analysed over time and used in internal assessments or meetings.

## why choose TestMeOnline?

With TestMeOnline you can benefit from:

- 24 hour online access to comprehensive Management Information (MI) – making it easy to analyse results and decide on future training needs
- industry standard test criteria and question bank up to diploma level – ensure you comply with RDR minimum benchmark standards
- comprehensive supervisory activity tools – benefit from more efficient supervisor resource planning
- flexible learning styles to suit differing employee requirements – develop a workforce with advanced job specific and interpersonal skills
- consultancy and set up based on best practice knowledge and industry experience – reduce the time and resource spent managing internal testing requirements



## how does TestMeOnline work?

TestMeOnline combines market leading software for regulatory training, testing and supervisory monitoring with industry specific content provided through our Financial Services Skills Council (FSSC) accredited group company, The Coaching Platform.

Progress against a company's competence standards can be viewed via a supervisor dashboard giving both the supervisor and senior management a clear view of adviser activity and development as well as the level of supervisory control. Automatic email notifications and alerts are built in to keep control of resources required to administer mandatory activities.

TestMeOnline comprises a question bank, test list and source material for an all encompassing training and testing solution.

## question bank

A series of question bank modules are available to select from which comprise questions linked to the Financial Services Skills Council (FSSC) learning outcomes. The question banks are updated quarterly and there is also the option to import company specific questions to the different modules.

## test set up

A series of tests relating specifically to your company's learning and CPD requirements is defined and set up at the outset. You can then build an unlimited number of future tests using the internal question bank provided at no additional charge. Tests can be issued to support CPD and/or examination preparation.

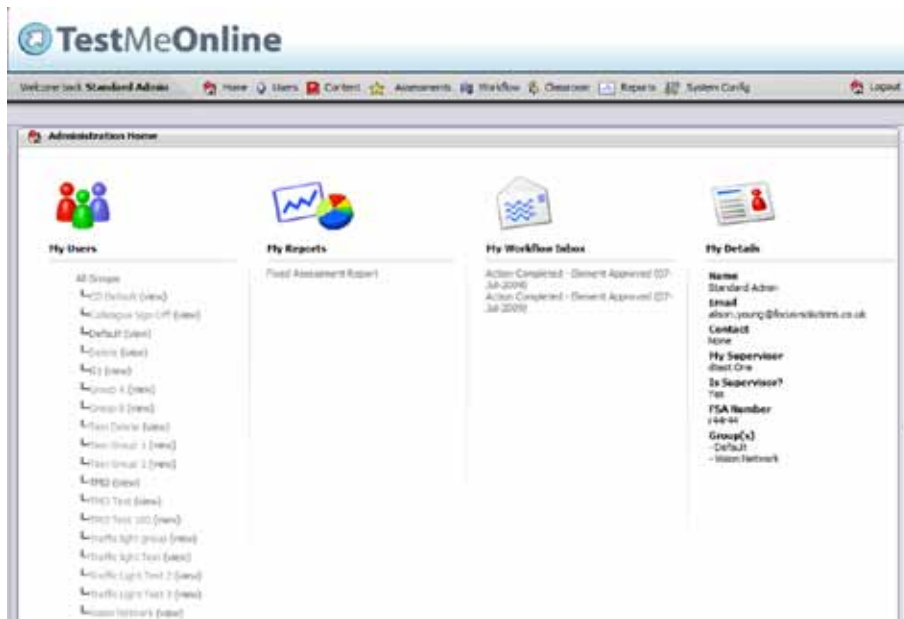
## source material

TestMeOnline includes access to the source training material which is updated on a quarterly basis. It is also possible to import your own source material to tailor the content specifically to your company. Test questions can be linked directly to the source material to promote ongoing learning and continuous improvement.

the exam material is excellent and fully supports the diploma tests. The questions are stretching and definitely pitched at the right level.

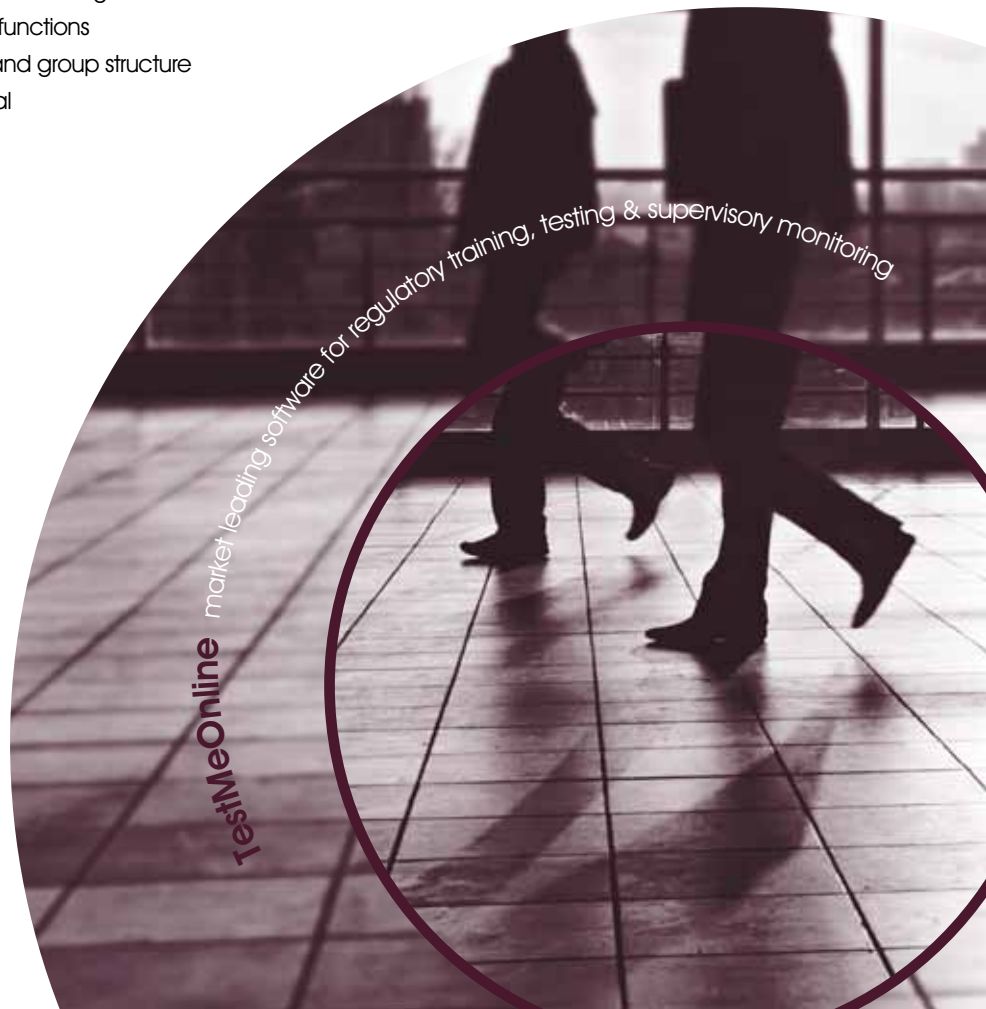
Honister Capital Development

## supervisor dashboard



## key features

- comprehensive reporting and supervisor dashboard functionality
- randomly generated or fixed tests & automatic marking
- externally maintained question bank and source material
- automated allocation of training events and activities
- flexible administrative functions
- comprehensive user and group structure
- secure, branded portal



## about **focus**

Focus Solutions is a leading provider of software and consultancy services to the financial services industry. We enable our clients to automate the delivery of products and services to their customers across multiple distribution channels in a rapid and efficient manner.

**We achieve this through a combination of:**

- agile software products
- in-depth expertise in the regulated financial services market
- proven project delivery

Our market leading products support a variety of sales automation projects ranging from multi-channel implementations to individual point of sale solutions. Designed to be flexible to respond to the ever changing regulated financial services market, the **focus:360°** product suite has been chosen by leading bancassurers, product providers, mortgage lenders, wealth managers and major distributor firms.

## why work with **focus**?

- specialised consulting services which provide access to a wealth of industry knowledge, experience and insight through real-world practitioners.
- powerful training and competency capabilities, including classroom training, online training and online assessment.
- proven project delivery with over 75 complex multi-channel implementation projects with several integration points successfully completed for a blue chip client base.
- experience of supporting systems that are utilised by 1000s of internal staff across multiple locations.
- industry thought leaders who publish whitepapers on latest market trends, comment in trade publications and speak at high profile events.



**focus solutions group plc**

cranford house, kenilworth road, leamington spa, warwickshire, cv32 6rq, united kingdom

t. +44 (0)1926 468300 f. +44 (0)1926 468400 w. [focus-solutions.co.uk](http://focus-solutions.co.uk)